



Rabbit anti Amyloid-beta (1-42) Polyclonal Antibody

Alternative Name(s): APP(1-42)

Order Information

- **Description:** Amyloid-beta (1-42)
- **Catalogue:** 600-750
- **Lot:** See label
- **Size:** 100ug/200ul
- **Host:** Rabbit
- **Clone:** nan
- **Application:** IHC(P), WB, ELISA
- **Reactivity:** Hu

ANTIGEN PREPARATION

A synthetic peptide 42 amino acids corresponding to N-terminus of Amyloid-beta (1-42)

BACKGROUND

Beta Amyloid precursor protein (APP) can be cleaved by secretases to form a number of peptides. Some of these peptides are secreted and can bind to the acetyltransferase complex APBB1/TIP60 to promote transcriptional activation, while others form the protein basis of the amyloid plaques found in the brains of patients with Alzheimer disease. Mutations in this gene have been implicated in autosomal dominant Alzheimer disease and cerebroarterial amyloidosis (cerebral amyloid angiopathy). A β (1-42), a major component of amyloid plaques, accumulates in neurons of Alzheimer's disease brains. Biochemical analysis of the amyloid peptides isolated from Alzheimer's disease brain indicates that A β (1-42) is the principal phenomena associated with senile plaque amyloids, while A β (1-40) is more abundant in cerebrovascular amyloid deposition.

PURIFICATION

The Rabbit IgG is purified by Epitope Affinity Purification

FORMULATION

This affinity purified antibody is supplied in sterile Phosphatebuffered saline (pH7.2) containing antibody stabilizer

SPECIFICITY

This antibody recognizes human Amyloid-beta (1-42) protein. The other species are not tested.

STORAGE

The antibodies are stable for 24 months from date of receipt when stored at -20°C to -70°C . The antibodies can be stored at 2°C - 8°C for three month without detectable loss of activity. Avoid repeated freezing-thawing cycles.

APPLICATIONS/SUGGESTED WORKING DILUTIONS*

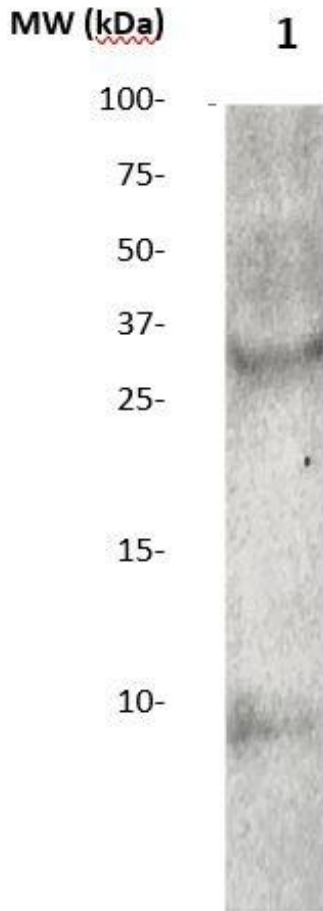
- Western Blot: 0.1-1 $\mu\text{g/ml}$
- ELISA: 0.01-0.1 $\mu\text{g/ml}$
- Immunoprecipitation: 2-5 $\mu\text{g/ml}$
- IHC: 2-10 $\mu\text{g/ml}$
- Flow cytometry: Not tested
- Molecular Weight: ~ 4
- Positive Control: Kidney Tissue
- Cellular Location: Cell Membrane

*Optimal dilutions should be determined by researchers for the specific applications.

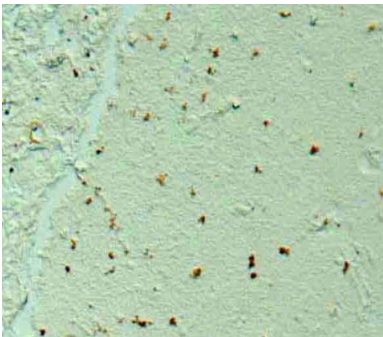
FOR RESEARCH USE ONLY.

AbboMax, Inc 2528 Qume Drive, Suite 8, San Jose, California 95131, USA
1 408-573-1898 (Tel). 1 408-573-1858 (Fax). www.abbomax.com info@abbomax.com

DATA ATTACHMENTS



Western Blot: The beta-Amyloid peptide (1-42aa) (20 ug/lane) immunoblotted by Rabbit anti-Amyloid-beta (1-42aa) antibody (Cat# 600-750) at 1:500. Observed a major immunoreactive band at molecular weight ~10 kDa.



Immunohistochemistry: Human brain (AD) (FFPE) stained with Rabbit anti-Amyloid beta (1-42) antibody (Cat# 600-750) at 1:200 for 10 min @ RT. Staining of formalin-fixed tissue requires boiling tissue sections in 10 mM Citrate Buffer, pH 6.0 for 10 min followed by cooling at RT for 20 min.

REFERENCES

FOR RESEARCH USE ONLY.